



WORTHEN INDUSTRIES

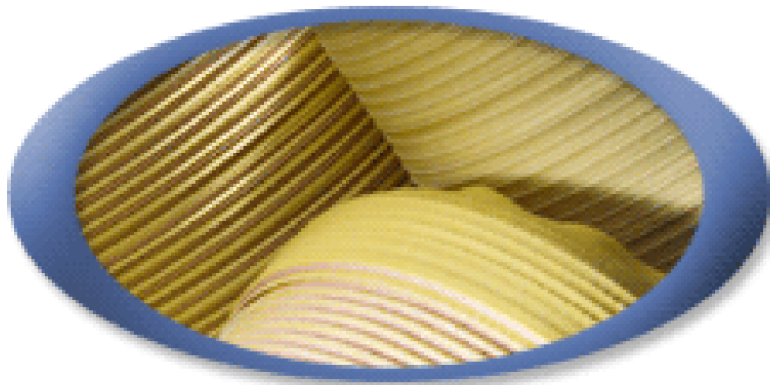
Quality Solutions for Industry

PRIME RIB LAYER

PARTS MANUAL



**MODEL SRMP
MODEL SRMP-A**



Sampson's Rib Group

1-800-WORTHEN

www.WORTHENIND.com

Plate 1A
SRMP-A

<u>PART NUMBER</u>	<u>PART NAME</u>	<u>QUANTITY</u>
<u>FRAME PARTS</u>		
SR-1AM	Frame	1
SR-375	Frame Hinge Bushings	2
S-26	Head Clamping Screw	1
S-278	Shaft Set Screws	2
<u>LOWER ARM PARTS</u>		
RL-164	Lower Arm	1
RL-140	Hinge Pins	2
S-4	Hinge Pin Set Screws	2
RLB-21A	Lower Roll (Assembly)	1
RLB-21	Lower Roll	1
RLB-23	Roll Fiber Ring	1
RLB-24	Ring Flange	1
S-9	Flange Screws	4
T-22	Roll Stud	1
W-2	Stud Washer	1
S-3	Stud Washer Screw	1
S-4	Stud Set Screw	1
RL-91	Work Guide (Standard)	1
RL-91 #1	Work Guide (For Cushion Covered Insoles)	1
S-296	Guide Clamp Screws	2
S-297	Guide Adjusting Screw	1
SR-330A	Slide Plate (Assembly)	1
SR-329	Gib	1
SR-330	Slide Plate	1
S-365	Gib Adjusting Screws	2
N-8	Gib Adjusting Screw Nuts	2
S-9	Plate Screws	2
S-287	Lower Arm Adjusting Screw	1
N-2	Screw Check Nut	1
SR-332	Lower Toggle Pivot Center Left	1
S-203	Pivot Locking Screw	1
W-38	Pivot Locking Screw Washer	1
N-4	Pivot Locking Screw Nut	1
SR-333	Lower Toggle Pivot Center Right	1
S-203	Pivot Locking Screw	1
N-8	Pivot Locking Screw Nut	1
F-78	Hinge Pin Collar	1
S-37	Collar Set Screws	2
P-19	Toggle Connecting Pin	1
S-203	Connecting Pin Set Screw	1
SR-221AM	Upper Toggle (Assembly)	1
SR-221M	Tape Shute Release	1
RL-138	Toggle	1
S-277	Release Adjusting Screws	2
W-4	Screw Washers	2
RL-157	Toggle Bushing (Upper Section)	1

PLATE 1 A

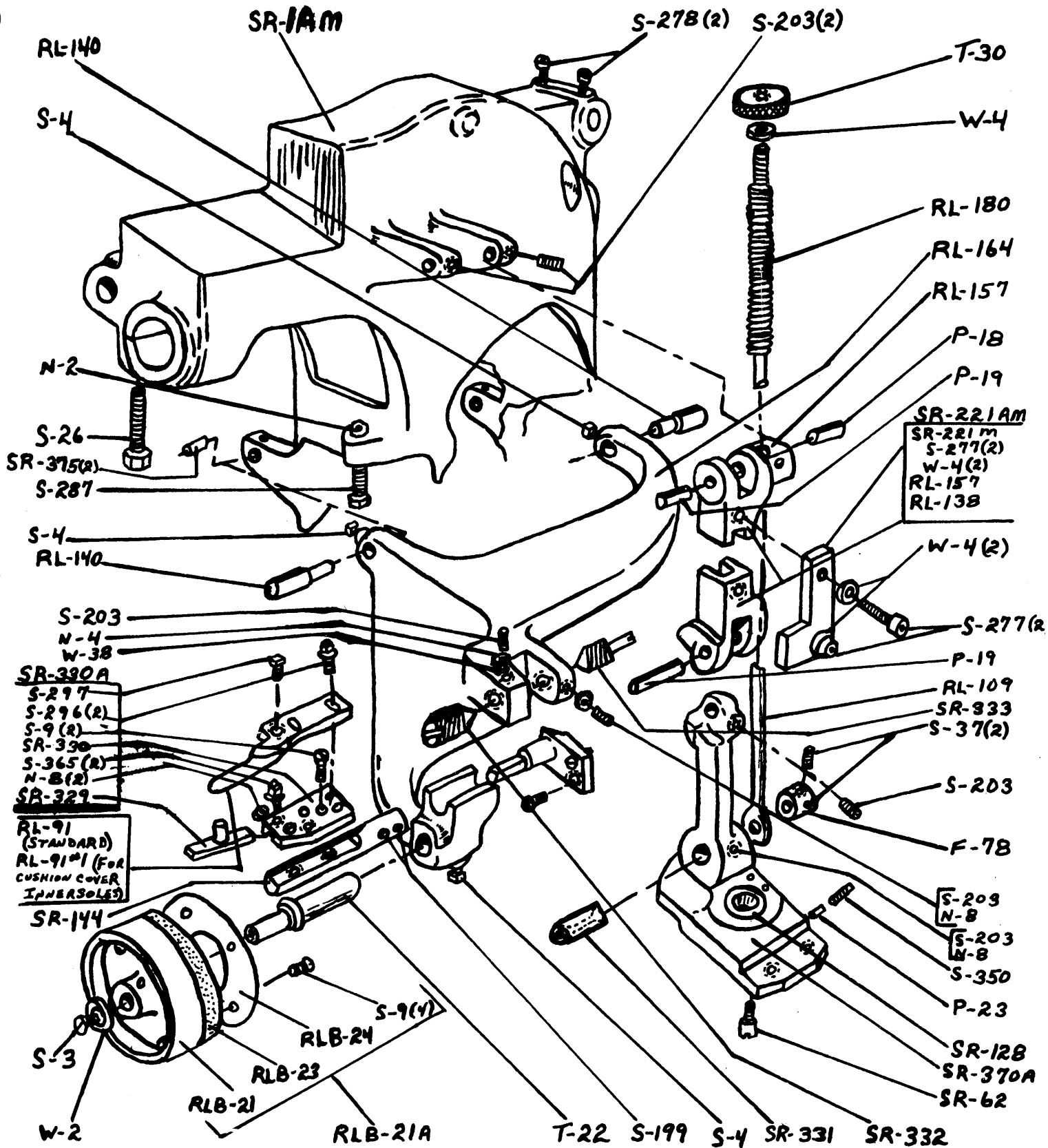


Plate 1A

<u>PART NUMBER</u>	<u>PART NAME</u>	<u>QUANTITY</u>
<u>LOWER ARM PARTS (CONT.)</u>		
P-18	Toggle Hinge Pin (Right)	1
P-19	Toggle Hinge Pin (Left)	1
S-203	Pin Set Screws	2
RL-109	Pressure Rod	1
RL-180	Pressure Rod Spring	1
T-30	Spring Adjusting Nut	1
W-4	Spring Washer	1
<u>BALTIMORE ATTACHMENT PARTS</u>		
SR-370A	Lower Toggle Arm	1
SR-128	Lower Toggle Arm Bushing	1
SR-331	Lower Toggle Arm Stud	1
S-203	Stud Locking Screw	1
N-8	Stud Locking Screw Nut	1
SR-62	Arm Stop Screw	1
P-23	Arm Stop Screw Locking Plug	1
S-350	Arm Stop Screw Locking Screw	1
SR-144	Guide Slide	1
S-199	Slide Screws	2

PLATE 2A

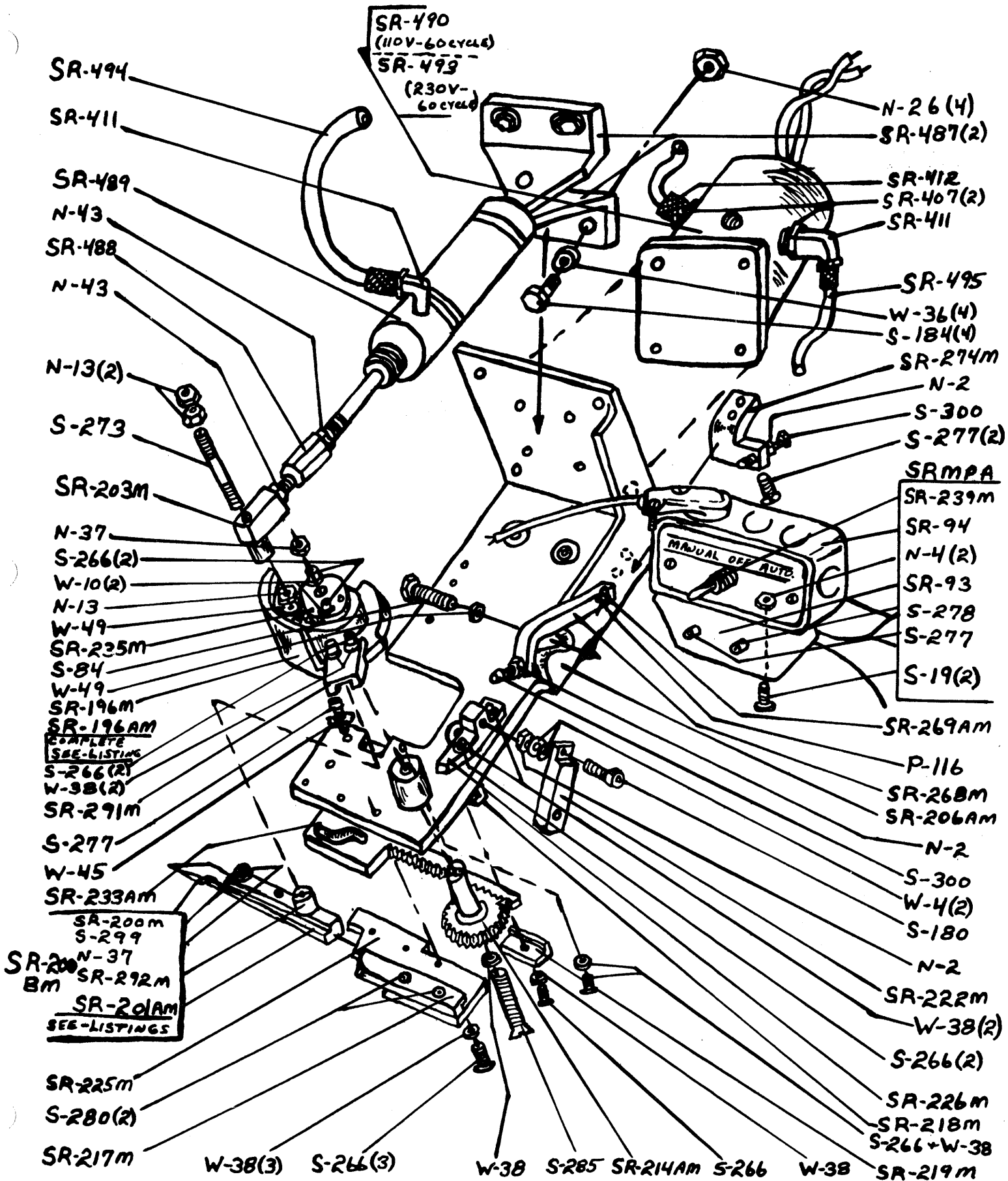


Plate 2A

<u>PART NUMBER</u>	<u>PART NAME</u>	<u>QUANTITY</u>
<u>SOLENOID AIR VALVE & AIR CUT OFF CYLINDER PARTS</u>		
SR-493	Solenoid Air Valve 230/60 or SR-490 110/60	1
SR-407	Reducer Bushing for Elbow	1
SR-411	Solenoid Air Valve Elbow	1
SR-495	Inlet Hose for Solenoid Air Valve	1
SR-407	Reducer Bushing for Half Union	1
SR-412	Half Union	1
SR-487	Air Cylinder Fulcrum Brackets	2
S-184	Air Cylinder & Air Valve Connecting Screws	4
W-36	Air Cylinder & Air Valve Connecting Screw Washers	4
N-26	Air Cylinder & Air Valve Connecting Screw Nuts	4
SR-489	Air Cut Off Cylinder	1
SR-411	Air Cut Off Cylinder Elbow	1
SR-494	Solenoid Valve Hose to Air Cut Off Cylinder	1
SR-488	Air Cylinder Adjusting Stud	1
N-43	Air Cylinder Adjusting Stud Lock Nuts	2
SR-203M	Air Cylinder Connecting Rod Block	1
S-273	Connecting Rod Block Stud	1
N-13	Block Stud Nuts	3
W-49	Stud Nut Washers	1
<u>BASE PLATE ON FRAME SR-1AM & PARTS</u>		
SR-206AM	Base Plate	1
S-84	Connecting Screw (Base Plate to Frame)	1
W-49	Screw Washer	1
S-277	Base Plate to Head Screw	1
W-45	Screw Washer	1
SR-274M	Base Plate Adjusting Bracket	1
S-277	Bracket Screws	2
S-300	Adjusting Screw	1
N-2	Adjusting Screw Lock Nut	1
SR-268M	Base Plate Latch	1
S-300	Latch Screw	1
N-2	Lock Nut	1
SR-269AM	Latch Fulcrum Pin	1
P-116	Cotter Pin	1
SR-226M	Shute Cam Return Stop	1
S-266	Return Stop Screws	2
W-38	Screw Lock Washers	2
SR-222M	Tape Shute Latch	1
S-180	Latch Screw	1
N-2	Latch Screw Nut	1
W-4	Nut Washers	2
SR-196AM	Shute & Knife Operating Cam (Assembly)	1
SR-196M	Shute Cam	1
SR-291M	Knife Operating Cam	1
S-266	Cam Connecting Screws	2
W-38	Screw Lock Washers	2
SR-214AM	Tape Retaining Plate Cam Gear & Shaft	1

Plate 2A

<u>PART NUMBER</u>	<u>PART NAME</u>	<u>QUANTITY</u>
<u>BASE PLATE ON FRAME SR-1AM & PARTS (CONT.)</u>		
S-285	Shaft Screw	1
W-38	Lock Washer	1
N-37	Cam Gear Screw Nut	1
SR-235M	Cam Gear Timing Cap	1
S-266	Timing Cap Screws	2
W-10	Screw Washers	2
SR-219M	Knife Bar Gear Plate	1
S-266	Gear Plate Screw	1
W-38	Screw Washer	1
SR-218M	Plate Cam Rack Gib	1
S-266	Gib Screw	1
W-38	Gib Screw Washer	1
SR-233AM	Tape Retainer Plate Cam	1
SR-225M	Knife Bar Slide Plate	1
S-266	Slide Plate Screws	3
W-38	Screw Washers	3
SR-200M	Knife	1
SR-201AM	Knife Bar (assembly)	1
SR-292M	Cam Follower	1
S-299	Knife & Knife Bar Connecting Screw	1
N-37	Screw Nut	1
SR200BM	Knife & Knife Bar (Complete)	1
SR-217M	Knife Bar Retainer	1
S-280	Knife Bar Retainer Screws	2
<u>ELECTRICAL PARTS FOR SRMP-A</u>		
SR-94	Handy Box Upper	1
SR-93	Handy Box Bracket	1
S-19	Bracket Connecting Screws	2
N-4	Connecting Screw Nuts	2
S-277	Screw-Handy Box to Frame (Short)	1
S-278	Screw-Handy Box to Frame (Long)	1
SR-239M	Handy Box Toggle Switch	1

PLATE 3A

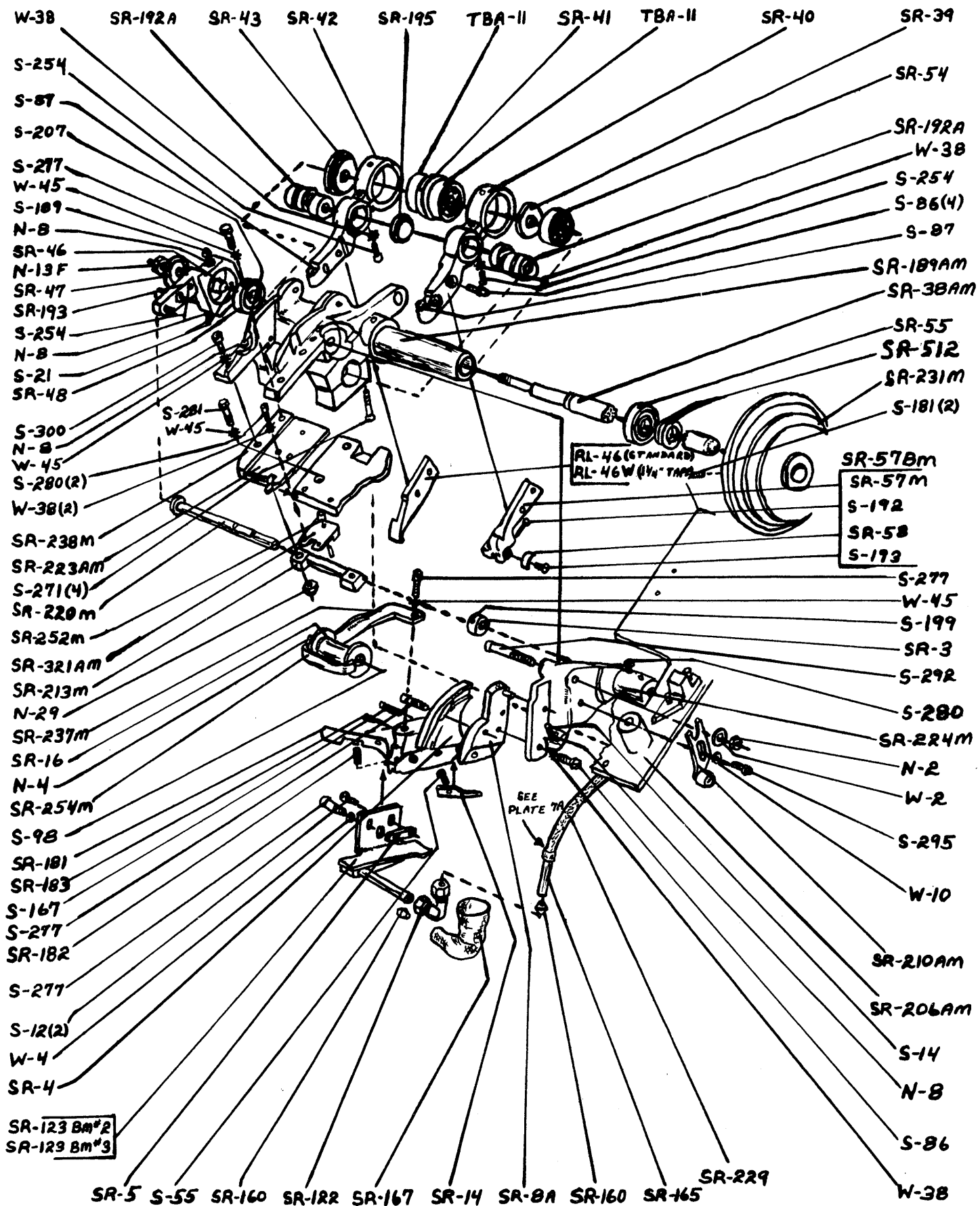


Plate 3A

<u>PART NUMBER</u>	<u>PART NAME</u>	<u>QUANTITY</u>
<u>HEAD & DRIVING PARTS</u>		
SR-189AM	Head	1
S-271	Head Bearing Cap Connecting Screws	4
S-207	Connecting Screw (Head to SR-238M)	1
N-8	Screw Nut	1
SR-231M	Cone Pulley	1
S-181	Pulley Set Screws	2
SR-38AM	Driving Shaft	1
SR-54	Head Shaft Bearing	1
SR-55	Frame Shaft Bearing	1
SR-512M	Frame Bearing Washer (Inside)	1
<u>HEAD FEED PARTS</u>		
SR-39	Inside Spacing Washer	1
SR-40	Feed Arm (Right)	1
S-254	Arm Ball Bearing Binding Screws	2
W-38	Binding Screw Lock Washers	2
TBA-11	Arm Ball Bearings	2
SR-41	Ball Bearing Eccentric	1
SR-42	Feed Arm (Left)	1
SR-43	Outside Spacing Washer	1
SR-193	Shaft Support	1
S-254	Support Screws	2
SR-48	Support Ball Bearing	1
SR-46	Ball Bearing Bushing	1
S-189	Ball Bearing Locating Screw	1
S-21	Ball Bearing Adjusting Screws	2
N-8	Screw Check Nuts	3
SR-47	Ball Bearing Washer	1
N-13F	Shaft Nut	1
SR-192A	Arm Rocker Eccentrics	2
SR-195	Arm Spacer	1
SR-57BM	Inside Feed Finger (Standard) Complete	1
SR-57M	Inside Feed Finger	1
SR-58	Circular Knife	1
S-192	Knife Adjusting Screw (Long)	1
S-193	Knife Pressure Screw (Short)	1
S-86	Inside Finger Binding Screws	2
RL-46	Outside Feed Finger (Standard)	1
RL-46W	Outside Feed Finger (1 1/4" Tape) (Specify)	1
S-86	Outside Finger Binding Screws	2
S-87	Finger Adjusting Screws	2
<u>TAPE SHUTE PARTS</u>		
SR-224M	Shute Hanger	1
SR-220M	Hanger Hinge Pin	1
S-280	Hanger Set Screw	1
SR-3	Hinge Pin Collar	1
S-199	Collar Set Screw	1

Plate 3A

<u>PART NUMBER</u>	<u>PART NAME</u>	<u>QUANTITY</u>
<u>TAPE SHUTE PARTS (CONT.)</u>		
SR-210AM	Tape Adjusting Lever	1
S-295	Connecting Screw (Lever to hanger)	1
W-10	Screw Washer	1
S-292	Connecting Screw (Lever to Hanger)	1
N-2	Connecting Screw Nut	1
W-2	Nut Washer	1
S-14	Shute Hanger Adjusting Screw	1
N-8	Adjusting Screw Lock Nut	1
SR-4	Tape Guide	1
SR-8A	Tape Guide Hanger	1
S-86	Hanger Binding Screw	1
W-38	Binding Screw Lock Washer	1
S-277	Guide Hanger Adjusting Screw	1
SR-14	Guide Spring	1
S-55	Spring Binding Screw	1
S-167	Spring Adjusting Screw	1
SR-123BM #2	Heat Shute (Without Holes)	1
SR-123BM #3	Heat Shute (With 6 Holes) (Specify)	1
S-277	Heat Shute Binding Screw	1
W-4	Binding Screw Washer	1
SR-5	Heat Shute Key	1
S-12	Key Screws	2
SR-237M	Tape Roll Support	1
S-277	Support Screw	1
W-45	Support Screw Washer	1
SR-16	Tape Guide Roll	1
S-98	Guide Roll Stud	1
N-4	Stud Nut	1
SR-254M	Tape Roll Guide	1
SR-181	Tape Retaining Latch	1
SR-182	Retaining Latch Spring	1
SR-183	Retaining Latch Pin	1
<u>BASE PLATE ON FRAME SR-1M & PARTS</u>		
SR-206AM	Base Plate	1
SR-213M	Spacer Bar	1
S-281	Spacer Bar Screw	1
W-45	Screw Lock Washer	1
S-300	Spacer Bar Clamp Screw	1
N-29	Clamp Screw Lock Nut	1
W-45	Lock Nut Washer	1
SR-238M	Tape Shearing Plate Support (Left)	1
S-277	Plate Support Screw	1
W-45	Screw Washer	1
SR-223AM	Tape Retaining Plate	1
SR-252M	Retaining Plate Bearing	1
SR-321AM	Bearing Retainer	1
S-280	Retainer Screws	2
W-38	Screw Washers	2

Plate 3A

<u>PART NUMBER</u>	<u>PART NAME</u>	<u>QUANTITY</u>
	<u>HEATING ATTACHMENT</u>	
SR-167	Flexible Tubing Loom	1
SR-122	Tubing Compression Elbow	1

PLATE 4A

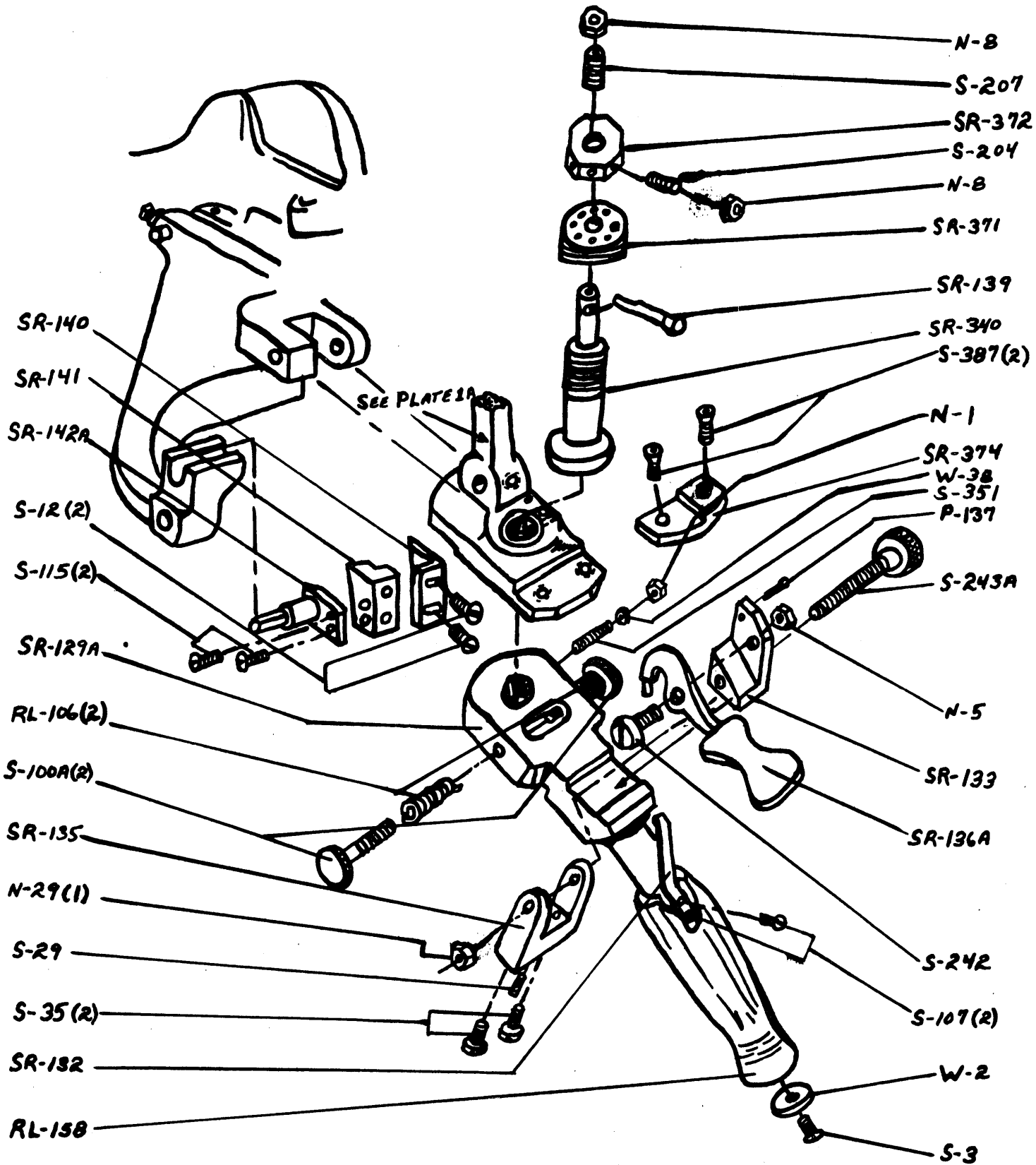


Plate 4A

<u>PART NUMBER</u>	<u>PART NAME</u>	<u>QUANTITY</u>
<u>BALTIMORE ATTACHMENT PARTS</u>		
SR-374	Trigger Stop	1
S-387	Trigger Stop Locking Screws	2
SR-129A	Shift Handle New Style	1
S-351	Shift Handle Stud Lock Screw	1
W-38	Shift Handle Stud Lock Screw Washer	1
N-1	Shift Handle Stud Lock Screw Nut	1
S-100A	Arm Adjusting Screws	2
RL-106	Adjusting Screw Springs	2
SR-132	Trigger Tension Spring	1
S-107	Spring Connecting Screws	2
RL-158	Handle Grip	1
W-2	Handle Grip Washer	1
S-3	Handle Grip Screw	1
SR-133	Toe Adjusting Block	1
S-243A	Adjusting Block Screw	1
N-29	Screw Locking Nut	1
SR-135	Block Support	1
S-35	Support Connecting Screws	2
S-29	Support Adjusting Screw	1
SR-136A	Trigger	1
S-242	Trigger Binding Screw	1
N-5	Binding Screw Nut	1
P-137	Trigger Lock Pin	1
SR-340	Shift Handle Stud	1
SR-371	Shift Handle Stud Thrust Bearing	1
SR-372	Bearing Retaining Nut	1
S-204	Bearing Retaining Nut Lock Screw	1
N-8	Bearing Retaining Nut Lock Screw Nut	1
SR-139	Margin Pawl	1
S-207	Pawl Locking Screw	1
N-8	Pawl Locking Screw Nut	1
SR-140	Pawl Guide Block (Right)	1
SR-141	Pawl Guide Block (Left)	1
S-12	Guide Block Connecting Screws	2
SR-142A	Slide Adjusting Stud Plate	1
S-115	Stud Plate Adjusting Screws	2

Plate 5A

<u>PART NUMBER</u>	<u>PART NAME</u>	<u>QUANTITY</u>
<u>FRAME & BASE PARTS</u>		
SR-301AM	Column Oil Cup	1
RL-2	Column	1
S-171	Column & Base Connecting Screws	4
RL-3	Base	1
<u>TRANSMITTER PARTS</u>		
SR-241AM	Drive Pulley (6" Dia) Standard Speed	1
RL-181	Drive Pulley Bushings	2
SR-242AM	Drive Pulley (5" Dia) Fast Speed	1
RL-181	Drive Pulley Bushings	2
RL-10A	Clutch Pulley	1
RL-181	Clutch Pulley Bushing	1
RL-11	Shaft	1
RL-12	Shaft Thimble	1
S-142	Shaft Set Screw	1
P-67	Set Screw Plug	1
RL-13	Inside Thrust Bearing	1
RL-14	Outside Thrust Bearing	1
RL-15	Transmitter Bracket	1
S-38	Bracket Screws	3
RL-16	Transmitter Bell Crank	1
P-68	Bell Crank Fulcrum Pin	1
P-116	Fulcrum Pin Cotter Pins	2
RL-21A	Bell Crank Brake	1
S-9	Brake Screws	2
RL-17	Clutch Screw	1
RL-18	Clutch Screw Nut	1
F-34	Bell Crank Spring	1
P-69	Spring Pin	1
N-2	Pin Check Nut	1
RL-19	Treadle Rod Upper	1
SR-30	Treadle Rod Lower	1
RL-27	Rod Adjusting Clamp	1
S-15	Adjusting Clamp Screws	4
RL-20	Treadle Rod Links	2
N-2	Link Check Nuts	2
S-180	Rod Link Screws	2
W-4	Screw Washers	2
N-2	Screw Check Nuts	2
<u>ELECTRICAL PARTS</u>		
SR-94	Handy Box (on motor)	1
<u>FOR 110V-SINGLE PHASE-60 CYCLE (SPECIFY)</u>		
RL-153	Switch Plate	1
S-348	Switch Plate Screws	4
RL-146	Switch (Chrome Cover-Box-Screws)	1

Plate 5A

<u>PART NUMBER</u>	<u>PART NAME</u>	<u>QUANTITY</u>
<u>FOR 220V-3 PHASE-60 CYCLES (SPECIFY)</u>		
SR-503	Switch Box Complete	1
SR-504	Switch Plate	1
S-348	Switch Plate Screws	4
S-115	Switch & Switch Plate Connecting Screws	2
N-1	Screw Nuts	2
<u>MOTOR PARTS</u>		
RL-141	Motor Shelf	1
S-118	Motor Shelf Adjusting Screws	2
N-12	Motor Shelf Check Nuts	2
RL-142	Motor Shelf Bracket	1
S-171	Bracket Screws	4
RL-143	Shaft	1
SR-522	Motor 208-220-440 Volts 3 Phase 3/4 HP) Specify	1
SR-497	Motor 115-230 Volts 1 Phase 3/4 HP) Specify	1
SR-34	Motor Pulley (4" Dia)	1
S-210	Pulley Set Screw	1
SR-33	Motor Pulley Belt (For SR242AM Standard Speed)	1
SE-127	Motor Pulley Belt (For SR-241AM Fast Speed)	1
S-23	Motor Screws	4
W-43	Screw Washers	4
<u>KNIFE TREADLE PARTS</u>		
RL-23	Knife Treadle	1
RL-130	Treadle Shaft	1
S-4	Shaft Set Screws	2
RL-25	Hanger Studs	2
S-85	Stud Screws	2
T-52	Shaft Collars	3
S-40	Collar Screws	6
RL-24	Power Treadle	1

PLATE 6A

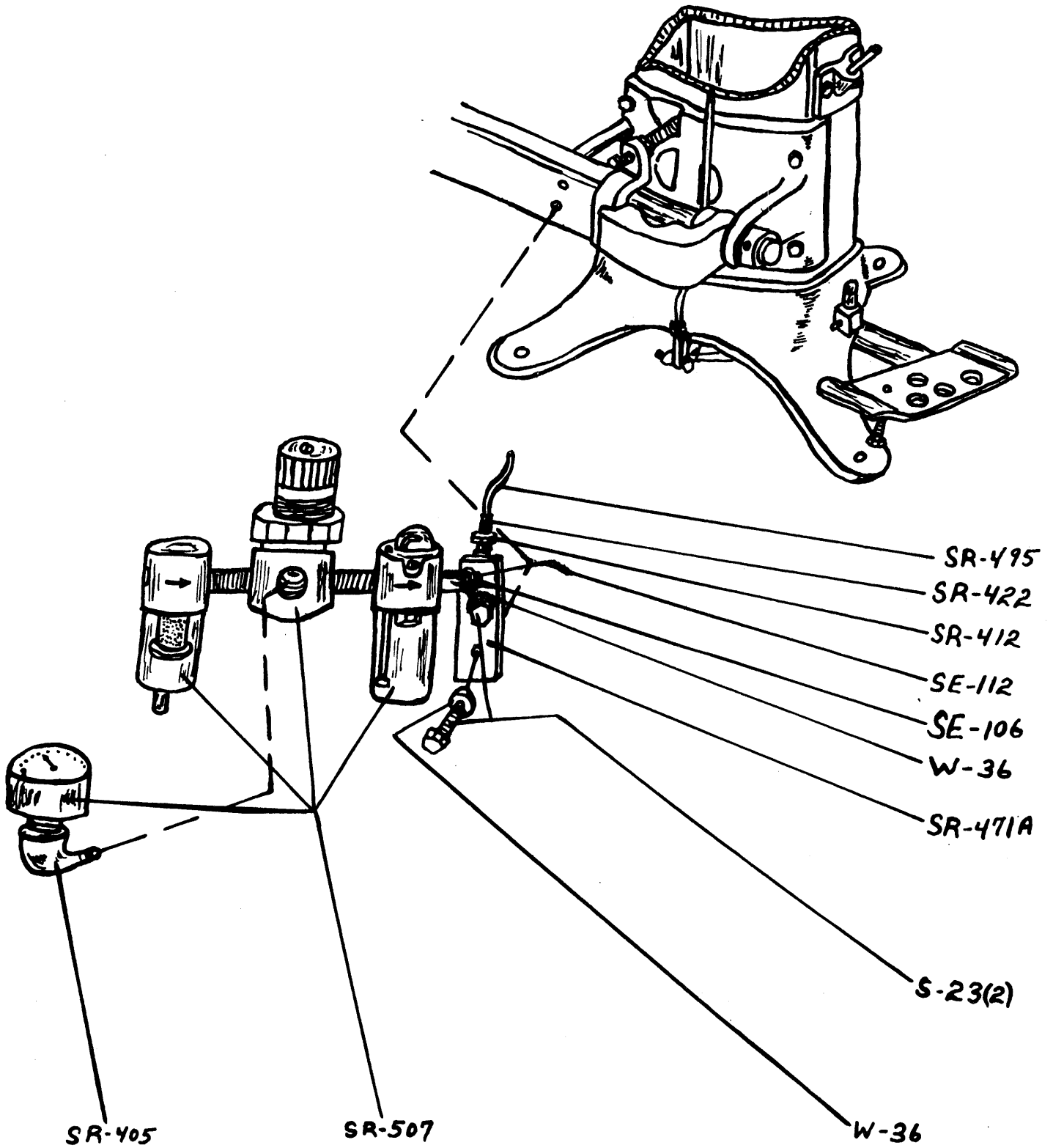


Plate 6A

<u>PART NUMBER</u>	<u>PART NAME</u>	<u>QUANTITY</u>
	<u>FILTER, REGULATOR, LUBRICATOR,</u> <u>GAUGE AIR LINE COMBINATION UNIT</u>	
SR-495	Inlet Hose to Solenoid Valve	1
SR-422	Plastic Sleeve & Brass Nut	1
SR-412	Half Union	1
SR-471A	Bracket & Elbow (Assembly)	1
S-23	Bracket Screws	2
W-36	Bracket Screw Washers	2
SE-112	Nipple	1
SE-106	Street Elbow	1
SR-507	Combination	1
SR-405	Street Elbow For Gauge	1

PLATE 6B

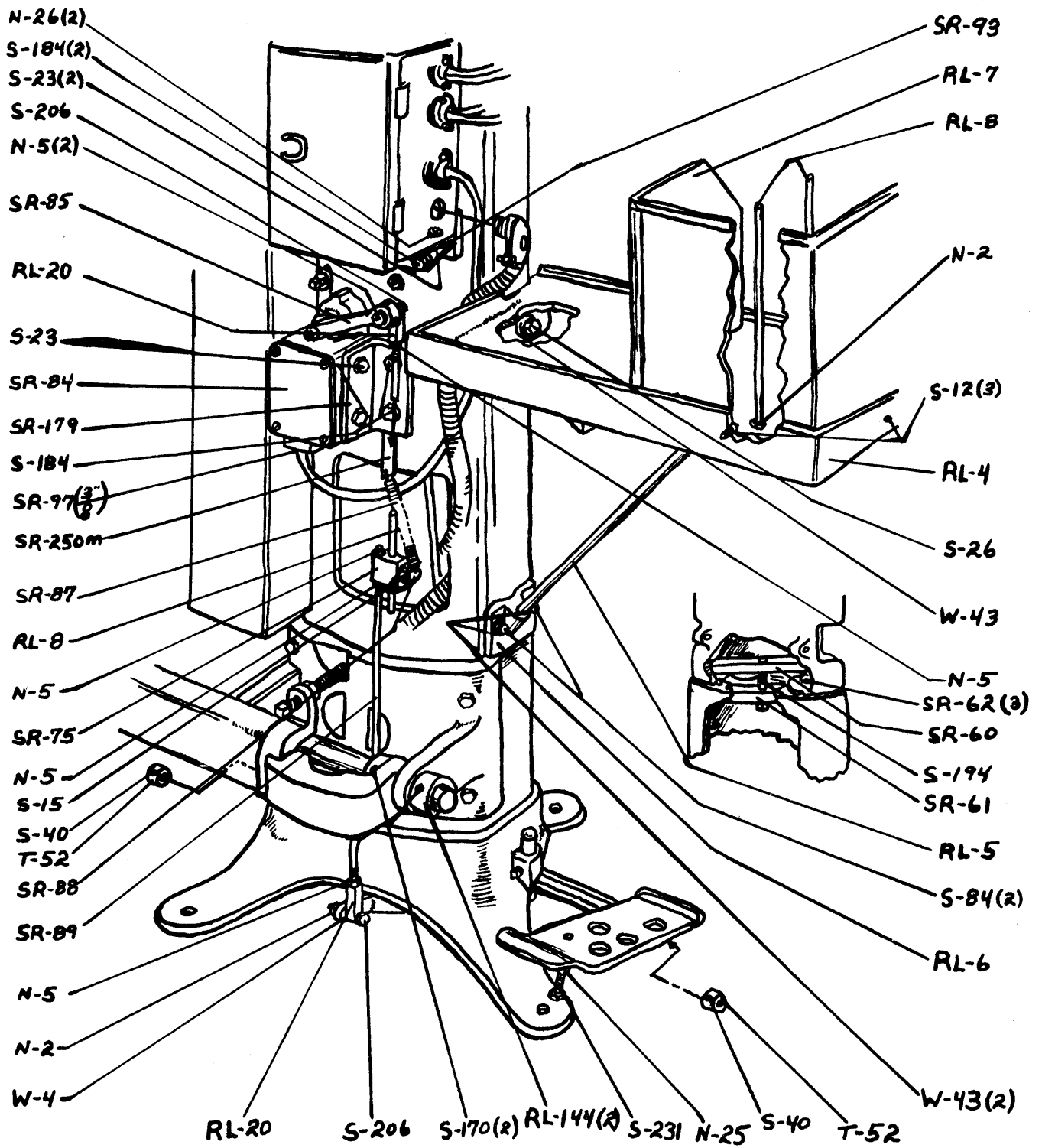


Plate 6B

<u>PART NUMBER</u>	<u>PART NAME</u>	<u>QUANTITY</u>
<u>TRAY PARTS</u>		
RL-4	Tray	1
S-26	Tray Screw	1
W-43	Tray Screw Washer	1
RL-5	Tray Supporting Rod	1
RL-6	Tray Rod Socket	1
S-84	Socket Screws	2
W-43	Socket Screw Washers	2
RL-7	Tray Box	1
S-12	Box Screws	3
RL-8	Box Pins	2
N-2	Pin Nuts	2
<u>SOLENOID PARTS</u>		
SR-179	Solenoid Switch Bracket	1
S-184	Connecting Screws (Bracket to Column)	2
SR-84	Solenoid Switch	1
SR-97 (3/8)	Rubber Bushing	1
S-23	Connecting Screws (Switch to Bracket)	2
SR-85	Switch Lever	1
RL-20	Connecting Link	1
S-206	Connecting Screw (Link & Lever)	1
N-5	Connecting Screw Nuts	2
RL-8	Switch Rod	1
N-5	Switch Rod & Connecting Link Nut	1
S-15	Switch Rod Set Screws	2
SR-75	Rod Adjusting Block	1
SR-87	Lever Tension Spring	1
SR-88	Tension Spring Link	1
SR-250M	Spring Connecting Link	1
SR-89	Treadle Rod (16" Long)	1
N-5	Treadle Rod Nuts	3
RL-20	Treadle Rod Link	1
S-206	Link Connecting Screw	1
W-4	Connecting Screw Spacing Washer	1
N-2	Connecting Screw Nut	1
S-231	Treadle Stop Screw	1
N-25	Stop Screw Nut	1
<u>ELECTRICAL PARTS</u>		
SR-93	Cabinet Bracket	1
S-23	Bracket Connecting Screws	2
N-26	Connecting Screw Nuts	2
S-184	Screws (Bracket to Column)	2
<u>FRAME & BASE PARTS</u>		
SR-60	Frame Clamp (Threaded)	1

Plate 6B

<u>PART NUMBER</u>	<u>PART NAME</u>	<u>QUANTITY</u>
<u>FRAME & BASE PARTS (CONT.)</u>		
SR-61	Frame Clamp (plain)	1
S-194	Frame & Column Connecting Screw	1
SR-62	Frame & Column Locating Screws	3
<u>COLUMN PARTS</u>		
RL-144	Motor Shelf Shaft Collars	2
S-170	Collar Screws	4
T-52	Threadle Shaft Collars	3
S-40	Collar Set Screws	6

PLATE 7A

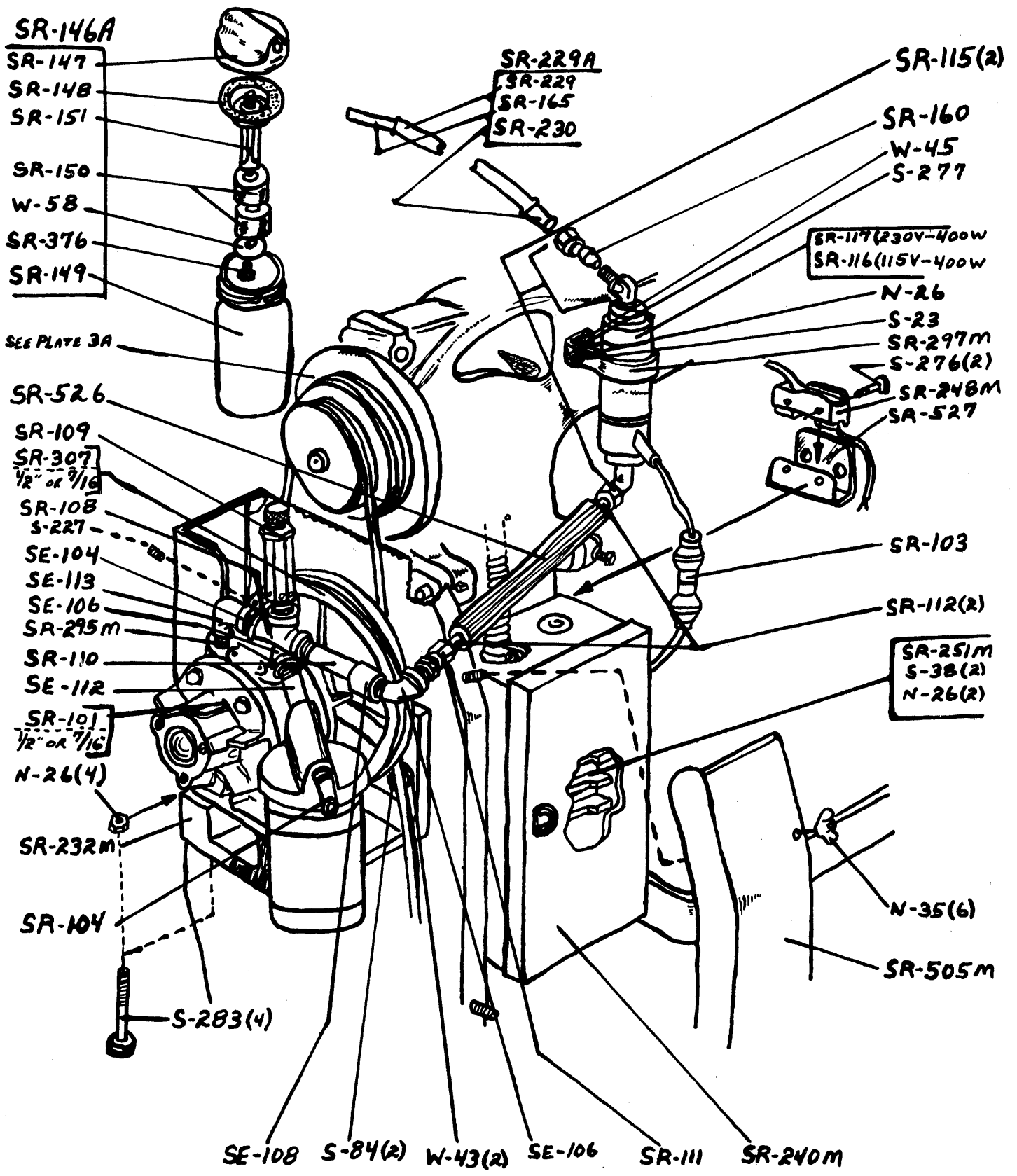


Plate 7A

<u>PART NUMBER</u>	<u>PART NAME</u>	<u>QUANTITY</u>
<u>HEATING ATTACHMENT</u>		
SR-229A	Heat Flexible Tubing (Assembly)	1
SR-229	Flexible Rubber Tubing (9" Long)	1
SR-230	Tubing (Heat Unit Side)	1
SR-165	Tubing (Shute Side)	1
SR-232M	Pump Mounting Bracket	1
S-84	Bracket Connecting Screws	2
W-43	Screw Washers	2
SR-101 1/2"	Pump) Specify	1
SR-101 7/16"	Pump) Specify	1
S-283	Connecting Screws (Pump to Bracket)	4
N-26	Connecting Screw Nuts	4
SR-307 1/2"	Pump Pulley (8" Dia) Specify	1
SR-307 7/16"	Pump Pulley (8" Dia) Specify	1
S-227	Pulley Set Screw	1
SR-146A	Pump Intake Filter (Assembly)	1
SR-147	Filter Cover	1
SR-148	Filter Gasket	1
SR-149	Filter Jar	1
SR-150	Filter Felts	2
W-58	Filter Cap	1
SR-376	Pump Intake Filter Rivet	1
SR-151	Filter Body	1
SE-112	Nipple (Air Pump to Filter) 1/4" X 2" Long	1
SR-104	Filter Vent Nipple	1
SE-106	1/4" Street Elbow (Male & Female)	1
SR-295M	Pump Nipple (1/4" X 2" Long)	1
SE-113	1/4" Elbow	1
SE-104	Close Nipple	1
SR-108	Tee (1/4" X 3/8")	1
SR-109	Air Relief Valve	1
SR-110	Nipple (1/4" X 3" Long)	1
SE-108	1/4" Coupling	1
SE-106	1/4" Street Elbow (Male & Female)	1
SR-111	Connector (1/4" Pipe Thread to 5/16" Tubing)	1
SR-160	Connector Ferrule	1
SR-112	Tubing (5/16" X 2" Long-Copper)	2
SR-526	Hose (Air Pump to Heat Unit)	1
SR-115	Heating Element & Tubing Connector	1
SR-116	Heating Element (115V-400W) Specify	1
SR-117	Heating Element (230V-400W) Specify	1
SR-103	Element Morse Connector	1
SR-297M	Element Bracket	1
S-277	Element Retaining Screw	1
W-45	Retaining Screw Washer	1
S-23	Bracket Clamp Screw	1
N-26	Clamp Screw Nut	1
SR-115	Heating Element & Flexible Tubing Connector	1
SR-160	Connecting Ferrule	1

Plate 7A

<u>PART NUMBER</u>	<u>PART NAME</u>	<u>QUANTITY</u>
	<u>BELT GUARD PARTS</u>	
SR-505M	Belt Guard	1
N-35	Belt Guard Wing Nuts	6
	<u>ELECTRICAL PARTS</u>	
SR-240M	Switch Box Cabinet	1
	<u>PARTS INSIDE CABINET</u>	
SR-251M	Terminal Connecting Block	1
S-38	Connecting Block Screws	2
N-26	Block Screw Nuts	2
	<u>ELECTRICAL PARTS</u>	
SR-248M	Softy Micro Switch	1
S-276	Micro Switch Screws	2
SR-527	Micro Switch Guard	1
SR-103	Morse Connectors	2

PLATE 8A

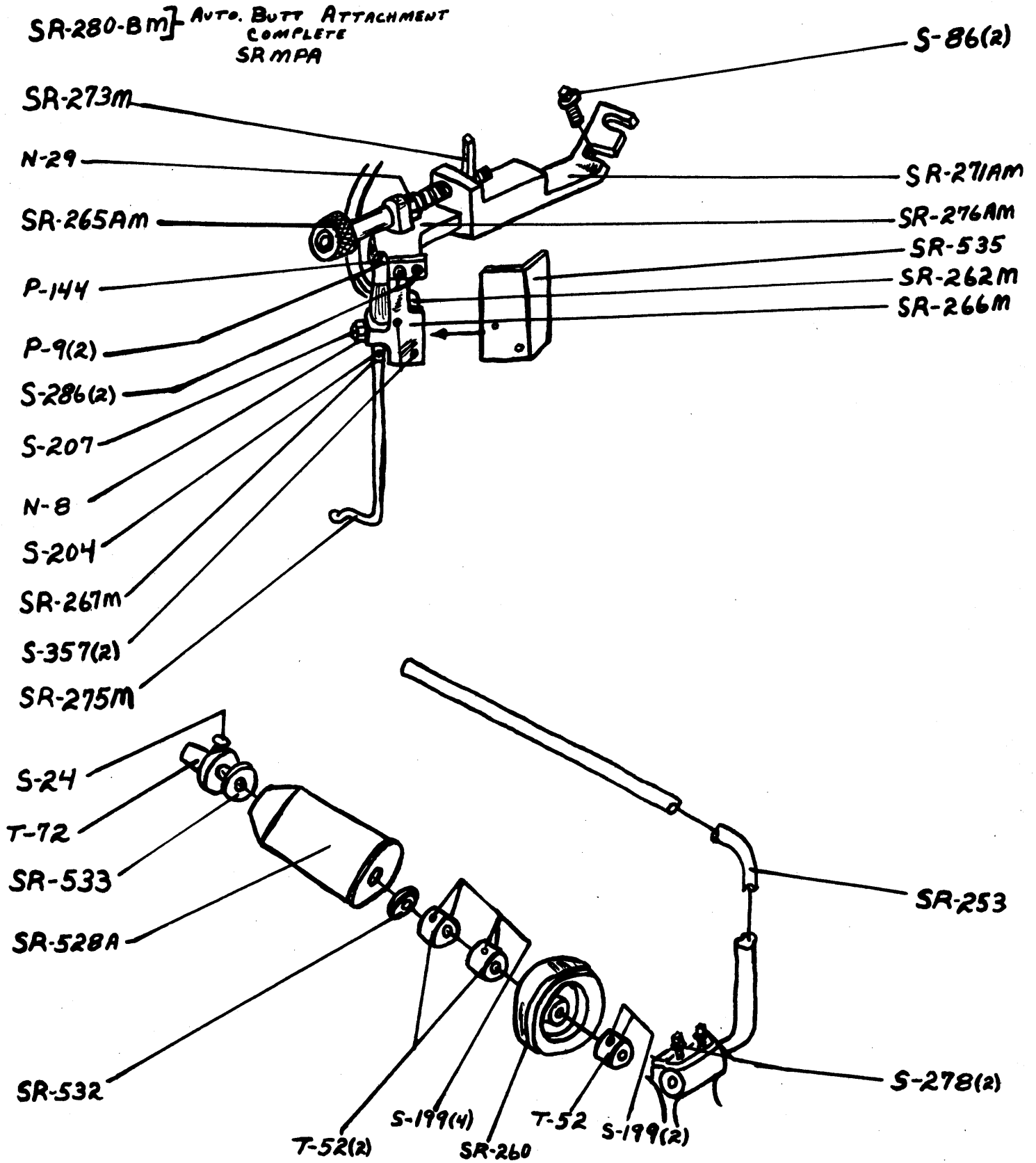


Plate 8A

<u>PART NUMBER</u>	<u>PART NAME</u>	<u>QUANTITY</u>
<u>TAPE SPOOL PARTS</u>		
SR-253	Tape Spool Shaft	1
S-278	Shaft Set Screws	2
SR-260	End Shield	1
T-52	End Shield Stop Collars	2
S-199	End Shield Stop Collar Screws	4
T-52	Tape Spool Holder & Brake Stop Collar	1
S-199	Tape Spool Holder & Brake Stop Collar Screws	2
SR-532	Rear Tape Holder Brake	1
SR-528A	Tape Spool Holder	1
SR-533	Front Tape Holder Brake	1
T-72	Tape Spool Holder Flange Collar	1
S-24	Flange Collar Thumb Screw	1
<u>AUTOMATIC BUTTING ATTACHMENT</u>		
<u>FOR SRMA AND SRMPA MACHINES</u>		
SR-271AM	Automatic Butting Trip Bracket	1
S-86	Trip Bracket Screws	2
SR-276AM	Automatic Butting Adjustment Screw Bracket	1
SR-265AM	Automatic Butting Adjustment Screw	1
SR-273M	Automatic Tripper Adjustment Screw Lock	1
N-29	Adjustment Screw Nut	1
SR-266M	Automatic Switch Plate	1
S-286	Switch Plate Screws	2
S-207	Tripper Bracket Adjustment Screw	1
N-8	Adjustment Screw Nut	1
SR-262M	Micro Switch	1
SR-535	Micro Switch Insulator	1
S-357	Switch & Insulating Connecting Screws	2
SR-267M	Automatic Tripper Bracket	1
P-144	Bracket Hinge Pin	1
P-9	Hinge Pin Cotter Pins	2
SR-275M	Automatic Tripper Lever	1
S-204	Lever Set Screw	1
SR-280BM	Automatic Butting Attachment (Complete)	1

WIRING DIAGRAM

